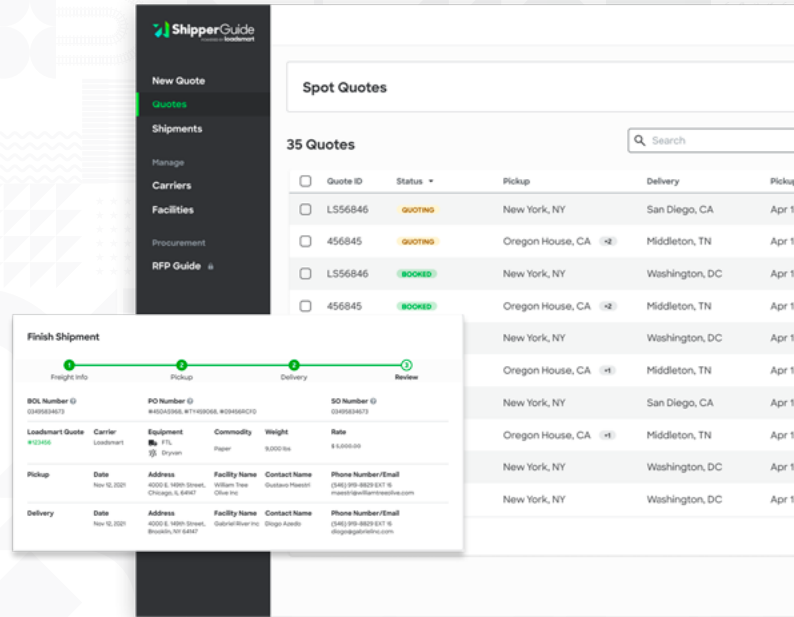


# Plan, Procure, Execute All In One Place

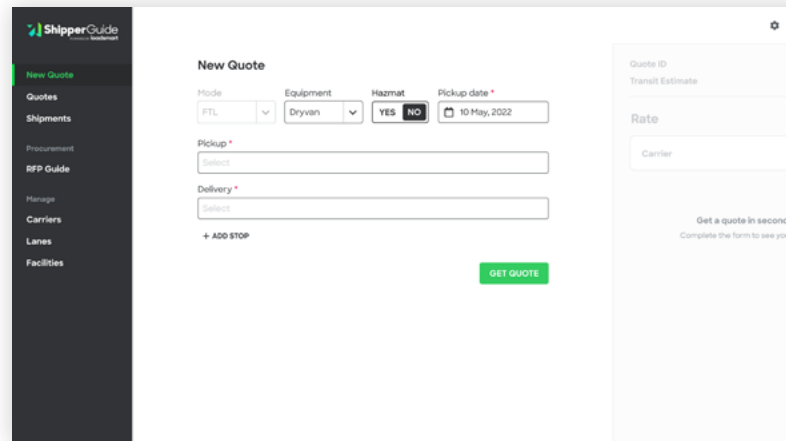
Shippers often find themselves navigating between dashboards, emails, and spreadsheets to manage their pricing requests, data insights, and carrier network - wasting time and money just trying to stay organized.



ShipperGuide is a unique and innovative all-in-one platform that delivers end-to-end support and transparency that shippers need. Shippers can optimize their operations by managing shipment requirements, discovering rates for spot and contracts - from Loadsmart and other providers in their network, tendering to their carrier of choice, and tracking loads from pickup to delivery, **all from one centralized dashboard.**

## One Centralized Platform For All Your Freight Needs

A single platform that enables you to manage all of spot, mini-bids, RFP rates and execute your freight all in one place. Easily track and trace all of your Loadsmart brokerage shipments and share real-time information about your loads with team and clients.



RATES - 9 INVITE CARRIERS - 8

9 Rates 11 SORT: LOWEST RATE

<input type="radio"/> Loadsmart <small>Service Details</small>	\$2,000.00
<input checked="" type="radio"/> XPO Logistics	\$2,500.00
<input type="radio"/> Mendes Brothers SA <small>SMALL FLEET</small>	\$2,880.00
<input type="radio"/> Maestri Transport Motors	\$2,999.00
<input type="radio"/> LogiFlex <small>FAST WESTERN</small>	\$3,090.00
<input type="radio"/> SAIA MOTORS	\$3,310.00
<input type="radio"/> Yana Trucking Inc	\$3,500.00

## Real-Time Rate Benchmarking

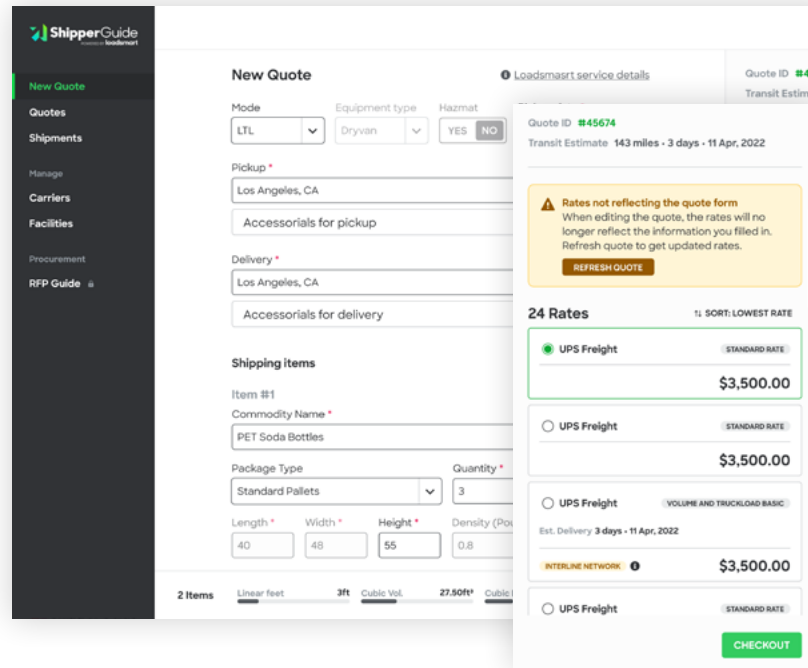
Increase your end-to-end visibility and compare rates to real-time benchmarks to validate that you are finding fair contract pricing and high quality carriers for all your shipments.

## Manage Your Own Carrier Network In Different Modes

Manage your carrier responses, bidding history, and compliance information with your own carrier network, or find new capacity with Loadsmart's vetted network.

### In different Modes: LTL, vLTL, FTL

Have access to FTL, LTL, and vLTL capabilities and receive multiple instantly bookable mode options for a single shipment with the carriers you want.



## Support When You Need It

Our team of logistics professionals is here to support you during implementation as well as day-to-day in order to help you maximize the power of ShipperGuide.

**83% reduction**  
**in time spent on**  
**rate procurement**  
**activities**

Customers have seamlessly integrated ShipperGuide's technology into their operations and have centralized their efforts to save themselves time and money when discovering spot and contract rates, as well as improved visibility for leadership

**ShipperGuide is**  
**an easy-to-use platform**  
**built for shippers by shippers**

Experience operational efficiencies that will help you move more with less

**Try ShipperGuide for free today!**

